

# \$560,000 - 4099 Kinsella Way, Edmonton

MLS® #E4432755

**\$560,000**

3 Bedroom, 2.50 Bathroom, 1,677 sqft  
Single Family on 0.00 Acres

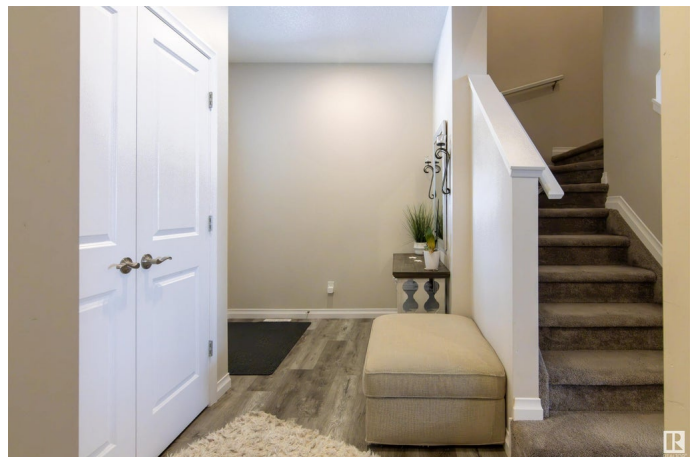
Keswick Area, Edmonton, AB

MOVE IN READY! Experience modern comfort in this well cared for 2 Storey home located in southwest Edmonton's sought after community of Keswick. Offering 1,676sqft of living space, this 2020 built home features 3 bedrooms, 2.5 bathrooms a double attached garage, plus a bonus living room on the 2nd floor. The main floor showcases a well-designed kitchen with Quartz countertops, tile backsplash, S/S appliances, a pantry & island that overlooks the spacious living room which boasts an electric fireplace. The dining area leads to a large deck with fully landscaped & fenced yard. The upper floor includes a very cozy bonus room, 3 spacious bedrooms, a full bathroom and a convenient laundry room. The primary bedroom includes a private ensuite including a shower and a walk-in closet. This home also features, Central A/C, Solar panels, front door & backyard cameras, smart front door lock & 10 smart light switches. Very clean and maintained home. Close to schools and easy access to all amenities.

Built in 2020

## Essential Information

MLS® #	E4432755
Price	\$560,000
Bedrooms	3



Bathrooms	2.50
Full Baths	2
Half Baths	1
Square Footage	1,677
Acres	0.00
Year Built	2020
Type	Single Family
Sub-Type	Detached Single Family
Style	2 Storey
Status	Active

### Community Information

Address	4099 Kinsella Way
Area	Edmonton
Subdivision	Keswick Area
City	Edmonton
County	ALBERTA
Province	AB
Postal Code	T6W 4J7

### Amenities

Amenities	Air Conditioner, Deck, Detectors Smoke, No Animal Home, No Smoking Home, Vinyl Windows, HRV System, Solar Equipment
Parking Spaces	4
Parking	Double Garage Attached

### Interior

Interior Features	ensuite bathroom
Appliances	Air Conditioning-Central, Dishwasher-Built-In, Dryer, Garage Control, Garage Opener, Microwave Hood Fan, Refrigerator, Stove-Electric, Washer, Window Coverings
Heating	Forced Air-1, Natural Gas
Fireplace	Yes
Fireplaces	Mantel, Stone Facing
Stories	2
Has Basement	Yes
Basement	Full, Unfinished

### Exterior

Exterior	Wood, Stone, Vinyl
Exterior Features	Back Lane, Playground Nearby, Schools, Shopping Nearby
Roof	Asphalt Shingles
Construction	Wood, Stone, Vinyl
Foundation	Concrete Perimeter

### **School Information**

Elementary	Joan Carr & Joey Moss
Middle	Joan Carr & Joey Moss

### **Additional Information**

Date Listed	April 25th, 2025
Days on Market	2
Zoning	Zone 56
HOA Fees Freq.	Other

DATA IS DEEMED RELIABLE BUT IS NOT GUARANTEED ACCURATE BY THE REALTORS® ASSOCIATION OF EDMONTON. COPYRIGHT 2025 BY THE REALTORS® ASSOCIATION OF EDMONTON. ALL RIGHTS RESERVED. Trademarks are owned or controlled by the Canadian Real Estate Association (CREA) and identify real estate professionals who are members of CREA (REALTOR®, REALTORS®) and/or the quality of services they provide (MLS®, Multiple Listing Service®)

Listing information last updated on April 27th, 2025 at 4:47am MDT