

Courtesy Of Beverley A Hasinoff Of Liv Real Estate

\$176,000 - 141 Roseland Village, Edmonton

MLS® #E4432685

\$176,000

3 Bedroom, 1.50 Bathroom, 1,164 sqft
Condo / Townhouse on 0.00 Acres

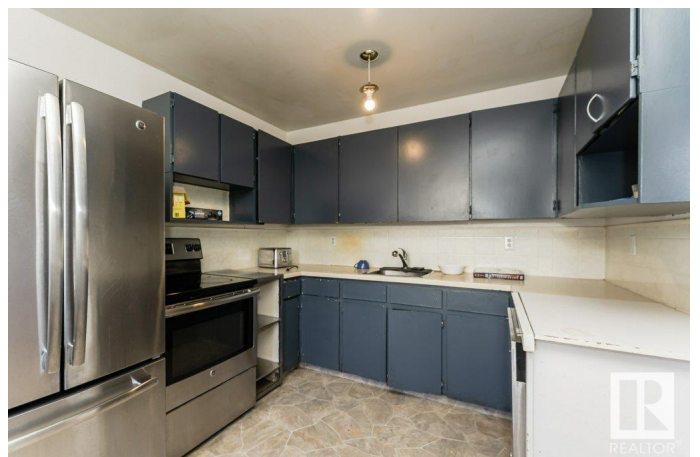
Northmount (Edmonton), Edmonton, AB

Huge Potential! Nestled in the heart of Northmount, this charming home eagerly awaits your vision and creativity. The cozy main floor features a kitchen, dining room, and a welcoming living space - perfect for crafting new memories and transforming this space into your ideal sanctuary. A half bath on the main floor creates effortless everyday living. Upstairs, 3 bedrooms promise restful nights and the full bath holds the potential for refreshing mornings and tranquil evenings. Use your personal touch and a dash of innovation to reveal its true potential. Beyond the walls of this home, the community of Northmount beckons with the promise of a vibrant lifestyle. A long-standing, active community league with an outdoor rink offers a strong sense of community spirit. Convenience is at your door, with 3 schools, a wide array of local amenities and family-friendly parks to keep everyone active. Shopping is extremely convenient and access to transit and major roadways makes commuting a breeze!

Built in 1969

Essential Information

MLS® #	E4432685
Price	\$176,000
Bedrooms	3



Bathrooms	1.50
Full Baths	1
Half Baths	1
Square Footage	1,164
Acres	0.00
Year Built	1969
Type	Condo / Townhouse
Sub-Type	Townhouse
Style	2 Storey
Status	Active

Community Information

Address	141 Roseland Village
Area	Edmonton
Subdivision	Northmount (Edmonton)
City	Edmonton
County	ALBERTA
Province	AB
Postal Code	T5E 5R6

Amenities

Amenities	No Smoking Home
Parking	Stall

Interior

Appliances	Dishwasher-Built-In, Refrigerator, Stove-Electric
Heating	Forced Air-1, Natural Gas
Stories	2
Has Basement	Yes
Basement	Full, Unfinished

Exterior

Exterior	Wood, Brick, Stucco
Exterior Features	Fenced, Landscaped, Low Maintenance Landscape, Playground Nearby, Public Transportation, Schools, Shopping Nearby
Roof	Asphalt Shingles
Construction	Wood, Brick, Stucco
Foundation	Concrete Perimeter

Additional Information

Date Listed	April 24th, 2025
Days on Market	3
Zoning	Zone 02
Condo Fee	\$300

DATA IS DEEMED RELIABLE BUT IS NOT GUARANTEED ACCURATE BY THE REALTORS® ASSOCIATION OF EDMONTON. COPYRIGHT 2025 BY THE REALTORS® ASSOCIATION OF EDMONTON. ALL RIGHTS RESERVED. Trademarks are owned or controlled by the Canadian Real Estate Association (CREA) and identify real estate professionals who are members of CREA (REALTOR®, REALTORS®) and/or the quality of services they provide (MLS®, Multiple Listing Service®)

Listing information last updated on April 27th, 2025 at 5:02am MDT