

\$435,000 - 8732 151 Street, Edmonton

MLS® #E4432538

\$435,000

5 Bedroom, 2.00 Bathroom, 1,046 sqft
Single Family on 0.00 Acres

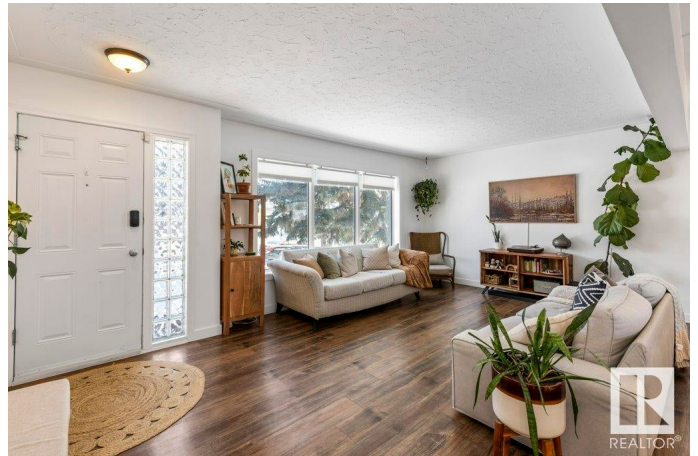
Jasper Park, Edmonton, AB

Beautifully renovated 1045 sq ft bungalow in desirable Jasper Gates! This spacious home features 3 bedrooms on the main level and 2 more in the fully finished basement—perfect for families or guests. Enjoy an open-concept main floor with neutral colors and luxury vinyl plank flooring throughout. The bright kitchen offers plenty of storage and a sink overlooking the expansive backyard—ideal for gardening or entertaining. With quick access to Whitemud Drive, West Edmonton Mall, and excellent schools nearby, this home blends comfort, convenience, and charm. The large lot offers future potential, while thoughtful updates make it move-in ready. Whether you're a growing family, a savvy investor, or someone who simply loves outdoor space, this home checks all the boxes. Located in a quiet, family-friendly neighborhood with parks and trails nearby. Don't miss this fantastic opportunity to own a stylish and functional home in one of west Edmonton's most convenient locations!

Built in 1958

Essential Information

MLS® #	E4432538
Price	\$435,000
Bedrooms	5



Bathrooms	2.00
Full Baths	2
Square Footage	1,046
Acres	0.00
Year Built	1958
Type	Single Family
Sub-Type	Detached Single Family
Style	Bungalow
Status	Active

Community Information

Address	8732 151 Street
Area	Edmonton
Subdivision	Jasper Park
City	Edmonton
County	ALBERTA
Province	AB
Postal Code	T5R 1H9

Amenities

Amenities	Detectors Smoke, See Remarks
Parking Spaces	4
Parking	Double Garage Detached

Interior

Appliances	Dishwasher-Built-In, Dryer, Microwave Hood Fan, Refrigerator, Stove-Electric, Washer
Heating	Forced Air-1, Natural Gas
Stories	2
Has Basement	Yes
Basement	Full, Finished

Exterior

Exterior	Wood, Vinyl
Exterior Features	Fenced, Fruit Trees/Shrubs, Schools, Shopping Nearby, See Remarks
Roof	Asphalt Shingles
Construction	Wood, Vinyl
Foundation	Concrete Perimeter

School Information

Elementary	Meadowlark School
Middle	Parkview School
High	Jasper Place School

Additional Information

Date Listed	April 24th, 2025
Days on Market	3
Zoning	Zone 22

DATA IS DEEMED RELIABLE BUT IS NOT GUARANTEED ACCURATE BY THE REALTORS® ASSOCIATION OF EDMONTON. COPYRIGHT 2025 BY THE REALTORS® ASSOCIATION OF EDMONTON. ALL RIGHTS RESERVED.Trademarks are owned or controlled by the Canadian Real Estate Association (CREA) and identify real estate professionals who are members of CREA (REALTOR®, REALTORS®) and/or the quality of services they provide (MLS®, Multiple Listing Service®)

Listing information last updated on April 27th, 2025 at 12:32am MDT