

\$575,000 - 1424 169 Street, Edmonton

MLS® #E4431090

\$575,000

4 Bedroom, 3.50 Bathroom, 1,884 sqft

Single Family on 0.00 Acres

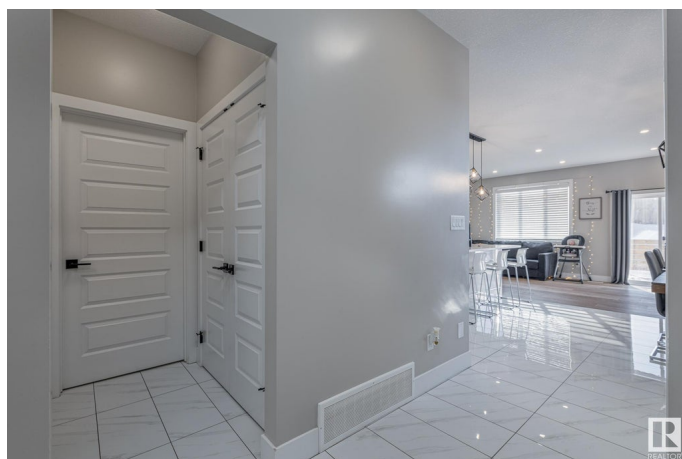
Glenridding Heights, Edmonton, AB

This spacious and fully upgraded duplex in Glenridding Heights was built in 2020 and offers incredible value with a LEGAL basement suite. Featuring 4 bedrooms and 3.5 bathrooms, it boasts 9 ft ceilings on both the main floor and in the suite. Enjoy luxury vinyl plank flooring, tile in high-traffic areas, upgraded lighting, and extra pot lights. The kitchen includes ceiling-height cabinets, a large island, black hardware, and premium appliances. Upstairs features 3 bedrooms, 2 full baths, laundry, and a main floor half bath. The 1 bed, 1 bath legal suite includes a private entry, full kitchen, in-suite laundry, and central A/C for comfort throughout the home. The exterior offers a deck, fenced and landscaped yard, double attached garage, and extra parking for 3 vehicles. Located near top-rated schools, parks, shopping, and premium golf courses. A fantastic opportunity in a highly desirable neighborhood!

Built in 2020

Essential Information

MLS® #	E4431090
Price	\$575,000
Bedrooms	4
Bathrooms	3.50
Full Baths	3



Half Baths	1
Square Footage	1,884
Acres	0.00
Year Built	2020
Type	Single Family
Sub-Type	Half Duplex
Style	2 Storey
Status	Active

Community Information

Address	1424 169 Street
Area	Edmonton
Subdivision	Glenridding Heights
City	Edmonton
County	ALBERTA
Province	AB
Postal Code	T6W 3P7

Amenities

Amenities	Off Street Parking, On Street Parking, Air Conditioner, Carbon Monoxide Detectors, Ceiling 9 ft., Deck, Detectors Smoke, Hot Water Natural Gas, No Smoking Home, HRV System, 9 ft. Basement Ceiling
Parking Spaces	4
Parking	Double Garage Attached

Interior

Appliances	Air Conditioning-Central, Alarm/Security System, Dishwasher - Energy Star, Garage Opener, Window Coverings, Dryer-Two, Refrigerators-Two, Stoves-Two, Washers-Two, Microwave Hood Fan-Two
Heating	Forced Air-1, Natural Gas
Fireplace	Yes
Fireplaces	Tile Surround
Stories	3
Has Suite	Yes
Has Basement	Yes
Basement	Full, Finished

Exterior

Exterior	Wood, Stone, Vinyl
----------	--------------------

Exterior Features	Airport Nearby, Fenced, Flat Site, Golf Nearby, Landscaped, No Back Lane, Playground Nearby, Public Transportation, Schools, Shopping Nearby
Roof	Asphalt Shingles
Construction	Wood, Stone, Vinyl
Foundation	Concrete Perimeter

Additional Information

Date Listed	April 16th, 2025
Days on Market	12
Zoning	Zone 56

DATA IS DEEMED RELIABLE BUT IS NOT GUARANTEED ACCURATE BY THE REALTORS® ASSOCIATION OF EDMONTON. COPYRIGHT 2025 BY THE REALTORS® ASSOCIATION OF EDMONTON. ALL RIGHTS RESERVED.Trademarks are owned or controlled by the Canadian Real Estate Association (CREA) and identify real estate professionals who are members of CREA (REALTOR®, REALTORS®) and/or the quality of services they provide (MLS®, Multiple Listing Service®)

Listing information last updated on April 28th, 2025 at 2:02am MDT