

## \$219,500 - 114 17459 98a Avenue, Edmonton

MLS® #E4428120

**\$219,500**

2 Bedroom, 2.00 Bathroom, 1,069 sqft  
Condo / Townhouse on 0.00 Acres

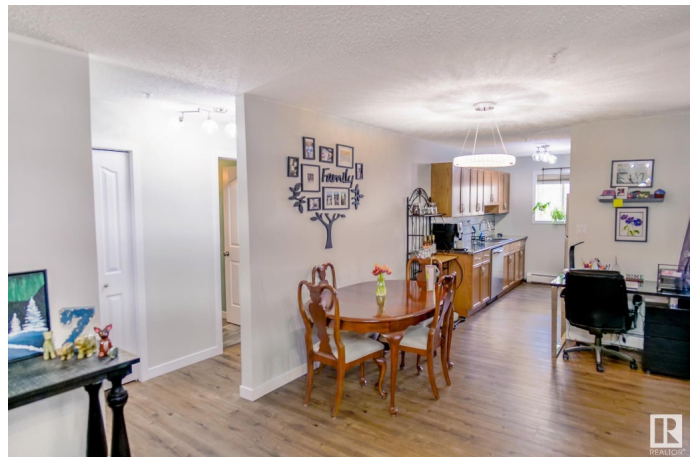
Terra Losa, Edmonton, AB

This 2-bedroom, 2-bathroom corner unit in Grande West offers excellent ground-floor convenience and added privacy as an end unit. The home has been updated throughout, featuring a spacious, open-concept living area with a cozy gas fireplace and a patio perfect for relaxing or entertaining. The primary bedroom easily fits a king-sized bed and includes a walk-through closet leading to a 3-piece ensuite. A second bedroom, a full bathroom, and an in-suite laundry/storage room complete the functional layout. The unit also includes heated, titled underground parking and a private storage cage for added convenience. Residents of Grande West enjoy the benefits of a secure, well-managed building that offers a social room, third-floor library, and access to nearby tennis courts. The building's location is prime, with easy access to West Edmonton Mall, Terra Losa Shopping Centre, public transit, restaurants, and more. This move-in ready condo is the perfect opportunity for home owners or investors alike!

Built in 1997

### Essential Information

MLS® #	E4428120
Price	\$219,500



Bedrooms	2
Bathrooms	2.00
Full Baths	2
Square Footage	1,069
Acres	0.00
Year Built	1997
Type	Condo / Townhouse
Sub-Type	Lowrise Apartment
Style	Single Level Apartment
Status	Active

### Community Information

Address	114 17459 98a Avenue
Area	Edmonton
Subdivision	Terra Losa
City	Edmonton
County	ALBERTA
Province	AB
Postal Code	T5T 6H8

### Amenities

Amenities	No Smoking Home, Parking-Visitor, Secured Parking, Social Rooms, Storage-In-Suite, Storage Cage
Parking Spaces	1
Parking	Heated, Underground

### Interior

Interior Features	ensuite bathroom
Appliances	Dishwasher-Built-In, Dryer, Hood Fan, Refrigerator, Stove-Electric, Washer, Window Coverings
Heating	Baseboard, Natural Gas
# of Stories	4
Stories	1
Has Basement	Yes
Basement	See Remarks, No Basement

### Exterior

Exterior	Wood, Stucco
Exterior Features	Playground Nearby, Public Transportation, Schools, Shopping Nearby

Roof	Asphalt Shingles
Construction	Wood, Stucco
Foundation	Concrete Perimeter

### **Additional Information**

Date Listed	March 28th, 2025
Days on Market	30
Zoning	Zone 20
Condo Fee	\$560

DATA IS DEEMED RELIABLE BUT IS NOT GUARANTEED ACCURATE BY THE REALTORS® ASSOCIATION OF EDMONTON. COPYRIGHT 2025 BY THE REALTORS® ASSOCIATION OF EDMONTON. ALL RIGHTS RESERVED. Trademarks are owned or controlled by the Canadian Real Estate Association (CREA) and identify real estate professionals who are members of CREA (REALTOR®, REALTORS®) and/or the quality of services they provide (MLS®, Multiple Listing Service®)

Listing information last updated on April 27th, 2025 at 12:32pm MDT