

Courtesy Of Jessica Libon Of Sweetly

\$385,000 - 8331 77 Avenue, Edmonton

MLS® #E4425317

\$385,000

3 Bedroom, 1.00 Bathroom, 806 sqft

Single Family on 0.00 Acres

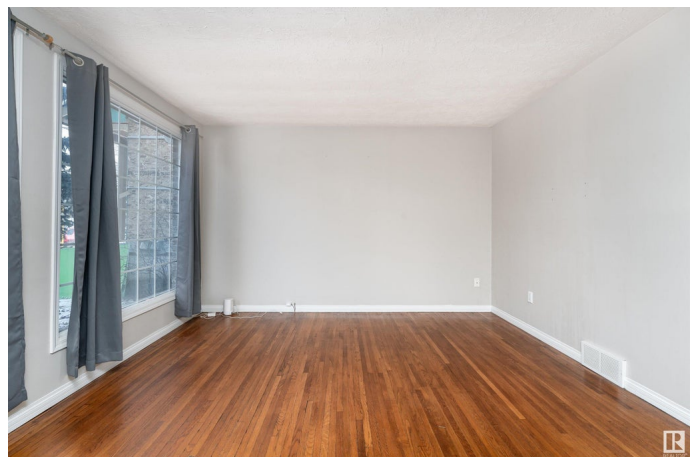
King Edward Park, Edmonton, AB

805 sq. ft. 3-level split in the sought-after King Edward Park on a 45'x130' lot! Many possibilities for redevelopment, rent out the home or choose to live in it yourself! The main floor features a bright living room with large windows and hardwood floors, leading to a spacious kitchen with ample storage and newer appliances. The upper level offers two cozy bedrooms and a full 4-piece bathroom. The lower level includes a third bedroom/den, laundry room, and plenty of storage space. Enjoy a fully fenced backyard and a double detached garage. Situated in a fantastic neighborhood close to Millcreek Ravine, Whyte Avenue, University of Alberta Campus Saint-Jean and steps away from playgrounds, a recreation center, bus stops, schools, and shopping!

Built in 1950

Essential Information

MLS® #	E4425317
Price	\$385,000
Bedrooms	3
Bathrooms	1.00
Full Baths	1
Square Footage	806
Acres	0.00
Year Built	1950



Type	Single Family
Sub-Type	Detached Single Family
Style	3 Level Split
Status	Active

Community Information

Address	8331 77 Avenue
Area	Edmonton
Subdivision	King Edward Park
City	Edmonton
County	ALBERTA
Province	AB
Postal Code	T6C 0L3

Amenities

Amenities	See Remarks
Parking Spaces	4
Parking	Double Garage Detached

Interior

Appliances	See Remarks
Heating	Forced Air-1, Natural Gas
Stories	3
Has Basement	Yes
Basement	Full, Partially Finished

Exterior

Exterior	Wood, Brick, Vinyl
Exterior Features	Back Lane, Fenced, Landscaped, Park/Reserve, Playground Nearby, Public Swimming Pool, Public Transportation, Schools, Shopping Nearby
Roof	Asphalt Shingles
Construction	Wood, Brick, Vinyl
Foundation	Concrete Perimeter

School Information

Elementary	Donnan School
Middle	Kenilworth School
High	W. P. Wagner School

Additional Information

Date Listed	March 12th, 2025
Days on Market	46
Zoning	Zone 17
Foreclosure	Yes

DATA IS DEEMED RELIABLE BUT IS NOT GUARANTEED ACCURATE BY THE REALTORS® ASSOCIATION OF EDMONTON. COPYRIGHT 2025 BY THE REALTORS® ASSOCIATION OF EDMONTON. ALL RIGHTS RESERVED.Trademarks are owned or controlled by the Canadian Real Estate Association (CREA) and identify real estate professionals who are members of CREA (REALTOR®, REALTORS®) and/or the quality of services they provide (MLS®, Multiple Listing Service®)

Listing information last updated on April 27th, 2025 at 8:02pm MDT