

## \$2,550,000 - 148 Windermere Crescent, Edmonton

MLS® #E4423995

**\$2,550,000**

5 Bedroom, 5.50 Bathroom, 4,717 sqft

Single Family on 0.00 Acres

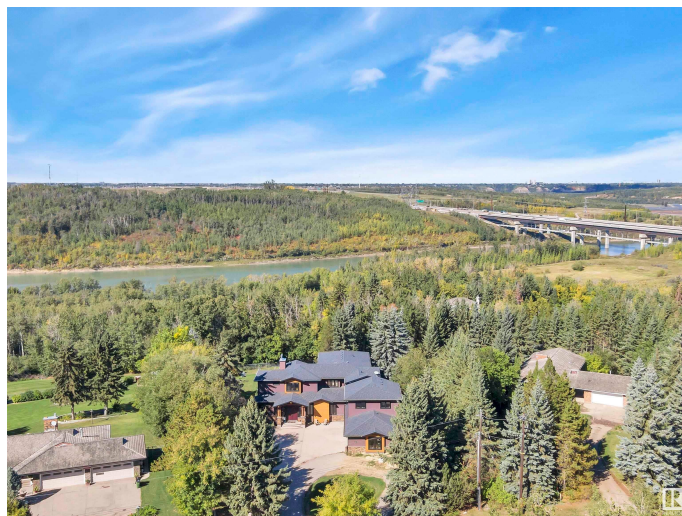
Windermere, Edmonton, AB

Absolutely stunning custom built walk out 2 story by Madison Park Homes, boasting 8000 sq ft of Living space sitting on just over 1 acre of pristine grounds backing the North Saskatchewan River in sought after Windermere. This one of a kind, truly unique home was featured in Avenue Magazine in 2014 which highlighted all of this homes grand designs, including the finely crafted woodwork throughout, the maple spiral staircase, hidden rooms, custom copper range hood, retractable hard cover for the pool and so much more! The perfect mix of a Family home and an entertainers dream with a massive eat up bar in the kitchen that can seat 10, formal dining area, wet bar, music room, Indoor pool which can easily turn into a gymnasium perfect for a game of floor hockey or a night time dance party when not in use, studio room above the 4 car garage with separate entrance that could make for an additional Bedroom, Home Office, converted to a suite you name it! This is a must see home to truly capture it's elegance.

Built in 2011

### Essential Information

|          |             |
|----------|-------------|
| MLS® #   | E4423995    |
| Price    | \$2,550,000 |
| Bedrooms | 5           |



|                |                        |
|----------------|------------------------|
| Bathrooms      | 5.50                   |
| Full Baths     | 4                      |
| Half Baths     | 3                      |
| Square Footage | 4,717                  |
| Acres          | 0.00                   |
| Year Built     | 2011                   |
| Type           | Single Family          |
| Sub-Type       | Detached Single Family |
| Style          | 2 Storey               |
| Status         | Active                 |

### Community Information

|             |                         |
|-------------|-------------------------|
| Address     | 148 Windermere Crescent |
| Area        | Edmonton                |
| Subdivision | Windermere              |
| City        | Edmonton                |
| County      | ALBERTA                 |
| Province    | AB                      |
| Postal Code | T6W 0S3                 |

### Amenities

|           |                                                   |
|-----------|---------------------------------------------------|
| Amenities | Bar, Deck, Pool-Indoor, Walkout Basement, Wet Bar |
| Parking   | Quad or More Attached, RV Parking                 |
| Has Pool  | Yes                                               |

### Interior

|                   |                                                                                                                         |
|-------------------|-------------------------------------------------------------------------------------------------------------------------|
| Interior Features | ensuite bathroom                                                                                                        |
| Appliances        | Dishwasher-Built-In, Dryer, Garage Control, Garage Opener, Refrigerator, Stove-Countertop Gas, Washer, Window Coverings |
| Heating           | Forced Air-2, Natural Gas                                                                                               |
| Fireplace         | Yes                                                                                                                     |
| Fireplaces        | Insert, Mantel                                                                                                          |
| Stories           | 3                                                                                                                       |
| Has Basement      | Yes                                                                                                                     |
| Basement          | Full, Finished                                                                                                          |

### Exterior

|                   |                                                                 |
|-------------------|-----------------------------------------------------------------|
| Exterior          | Wood, Brick, Stucco                                             |
| Exterior Features | Backs Onto Park/Trees, Fenced, Golf Nearby, Landscaped, No Back |

Lane, No Through Road, Playground Nearby, Private Setting, River Valley View, Schools, Shopping Nearby

|              |                     |
|--------------|---------------------|
| Roof         | Asphalt Shingles    |
| Construction | Wood, Brick, Stucco |
| Foundation   | Concrete Perimeter  |

### **Additional Information**

|                |                 |
|----------------|-----------------|
| Date Listed    | March 5th, 2025 |
| Days on Market | 53              |
| Zoning         | Zone 56         |

DATA IS DEEMED RELIABLE BUT IS NOT GUARANTEED ACCURATE BY THE REALTORS® ASSOCIATION OF EDMONTON. COPYRIGHT 2025 BY THE REALTORS® ASSOCIATION OF EDMONTON. ALL RIGHTS RESERVED. Trademarks are owned or controlled by the Canadian Real Estate Association (CREA) and identify real estate professionals who are members of CREA (REALTOR®, REALTORS®) and/or the quality of services they provide (MLS®, Multiple Listing Service®)

Listing information last updated on April 27th, 2025 at 1:32am MDT