

## \$649,900 - 10415 68 Avenue, Edmonton

MLS® #E4421919

**\$649,900**

4 Bedroom, 3.50 Bathroom, 1,643 sqft

Condo / Townhouse on 0.00 Acres

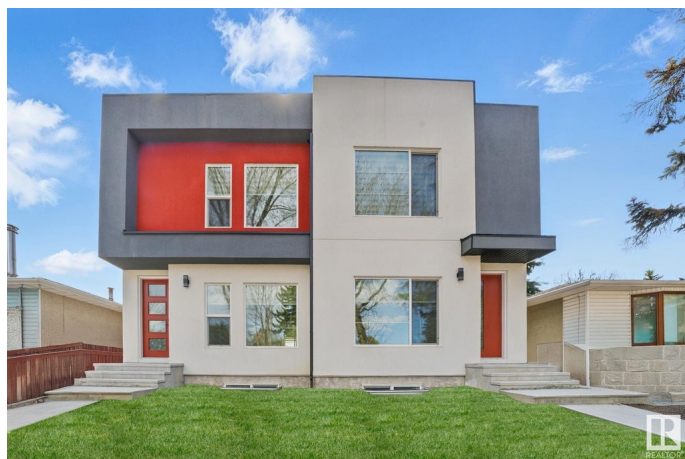
Allendale, Edmonton, AB

Welcome to Allendale! BRAND NEW half duplex built by Neelâ€™s Custom Homes. Finished with a LEGAL 1 BEDROOM SELF-CONTAINED BASEMENT SUITE with separate entrance. Above grade includes 3 bedrooms, 2.5 baths, chef kitchen, two-tone cabinets, granite counters, 2nd floor laundry with cabinets and the master includes a walk in closet, 4 pc ensuite with tiled walls to the ceiling. Luxury vinyl plank throughout the main floor. Other features include Black metal railings and modern linear fireplace. Out back includes a deck and sidewalk blocks to the double detached garage and the modern exterior stucco façade with metal accents and precast front steps. Excellent location near the University of Alberta, all amenities, and public transportation. No Condo Fees!!!

Built in 2022

### Essential Information

MLS® #	E4421919
Price	\$649,900
Bedrooms	4
Bathrooms	3.50
Full Baths	3
Half Baths	1
Square Footage	1,643
Acres	0.00





Year Built	2022
Type	Condo / Townhouse
Sub-Type	Half Duplex
Style	2 Storey
Status	Active

### Community Information

Address	10415 68 Avenue
Area	Edmonton
Subdivision	Allendale
City	Edmonton
County	ALBERTA
Province	AB
Postal Code	T6H 2A8

### Amenities

Amenities	Ceiling 10 ft., Closet Organizers, Deck, Detectors Smoke, No Animal Home, No Smoking Home, 9 ft. Basement Ceiling
Parking	Double Garage Detached

### Interior

Interior Features	ensuite bathroom
Appliances	Dishwasher-Built-In, Dryer-Two, Refrigerators-Two, Stoves-Two, Washers-Two
Heating	Forced Air-1, Natural Gas
Fireplace	Yes
Fireplaces	Insert
Stories	3
Has Suite	Yes
Has Basement	Yes
Basement	Full, Finished

### Exterior

Exterior	Wood, Stucco
Exterior Features	Back Lane, Playground Nearby, Public Transportation, Schools, Shopping Nearby
Roof	Asphalt Shingles
Construction	Wood, Stucco
Foundation	Concrete Perimeter



**Additional Information**

Date Listed            February 18th, 2025  
Days on Market      69  
Zoning                Zone 15

DATA IS DEEMED RELIABLE BUT IS NOT GUARANTEED ACCURATE BY THE REALTORS® ASSOCIATION OF EDMONTON. COPYRIGHT 2025 BY THE REALTORS® ASSOCIATION OF EDMONTON. ALL RIGHTS RESERVED.Trademarks are owned or controlled by the Canadian Real Estate Association (CREA) and identify real estate professionals who are members of CREA (REALTOR®, REALTORS®) and/or the quality of services they provide (MLS®, Multiple Listing Service®)  
Listing information last updated on April 27th, 2025 at 10:47pm MDT