

Courtesy Of Wendi Darling Of Century 21 Masters

## \$529,900 - 81 Silverstone Drive, Stony Plain

MLS® #E4401829

**\$529,900**

3 Bedroom, 3.50 Bathroom, 1,911 sqft

Single Family on 0.00 Acres

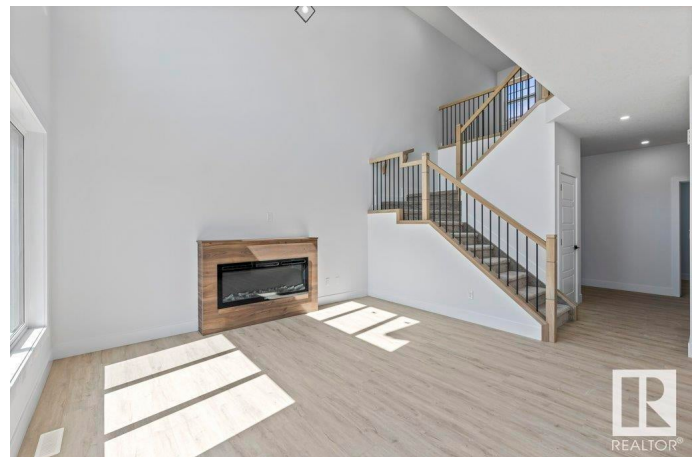
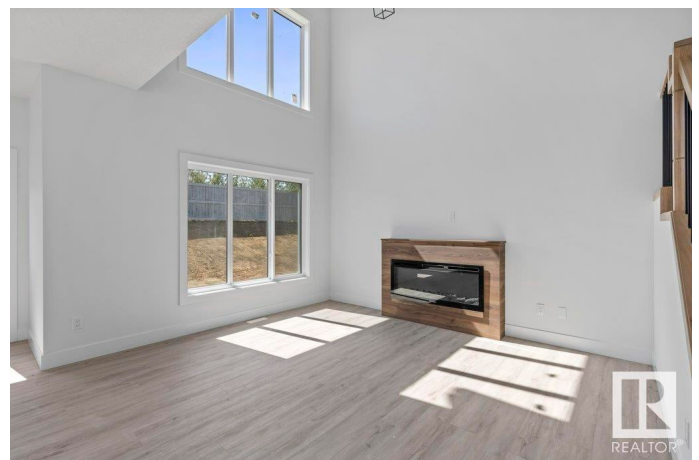
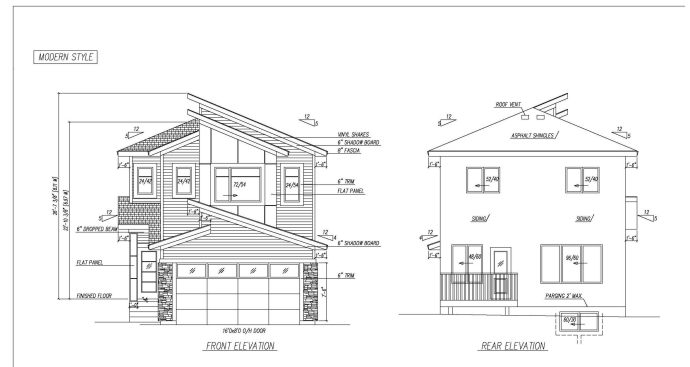
Silverstone, Stony Plain, AB

Incredible time to get involved in the building process and have a say in the final interior design choices! This 3 Bed two story home will be ready for it's new owner in the spring! South facing yard, double attached garage, walk through pantry, wooden closet organizers, even 9'™ ceilings on all floors. Sidhu Homes is a LUXURY builder specializing in high end custom homes and is now offering entry level family homes maintaining the high end specification!! Granite or quartz countertops, electric fireplace, large bedrooms, and two primary suites! The charming community of Silverstone has the amenities of the big city as well as fantastic trails and small town feel. This models spec is 2007square feet , has upstairs laundry, main floor Den, Bonus Room, W/I Closet, separate exterior entrance, soaring 18'™ reveal at entry, and the opportunity to individualize the interior paint/material. Our team is happy to work with you to make sure it's your perfect HOME!

Built in 2024

### Essential Information

|          |           |
|----------|-----------|
| MLS® #   | E4401829  |
| Price    | \$529,900 |
| Bedrooms | 3         |



|                |                        |
|----------------|------------------------|
| Bathrooms      | 3.50                   |
| Full Baths     | 3                      |
| Half Baths     | 1                      |
| Square Footage | 1,911                  |
| Acres          | 0.00                   |
| Year Built     | 2024                   |
| Type           | Single Family          |
| Sub-Type       | Detached Single Family |
| Style          | 2 Storey               |
| Status         | Active                 |

### Community Information

|             |                      |
|-------------|----------------------|
| Address     | 81 Silverstone Drive |
| Area        | Stony Plain          |
| Subdivision | Silverstone          |
| City        | Stony Plain          |
| County      | ALBERTA              |
| Province    | AB                   |
| Postal Code | T7Y 0E8              |

### Amenities

|                |                                                                                                                                            |
|----------------|--------------------------------------------------------------------------------------------------------------------------------------------|
| Amenities      | Ceiling 9 ft., Closet Organizers, No Animal Home, No Smoking Home, See Remarks, HRV System, Natural Gas BBQ Hookup, 9 ft. Basement Ceiling |
| Parking Spaces | 4                                                                                                                                          |
| Parking        | Double Garage Attached                                                                                                                     |

### Interior

|                   |                                                                                                                                            |
|-------------------|--------------------------------------------------------------------------------------------------------------------------------------------|
| Interior Features | ensuite bathroom                                                                                                                           |
| Appliances        | Appliances Negotiable, Dishwasher-Built-In, Dryer, Garage Control, Garage Opener, Microwave Hood Fan, Refrigerator, Stove-Electric, Washer |
| Heating           | Forced Air-1, Natural Gas                                                                                                                  |
| Fireplace         | Yes                                                                                                                                        |
| Fireplaces        | Remote Control                                                                                                                             |
| Stories           | 2                                                                                                                                          |
| Has Basement      | Yes                                                                                                                                        |
| Basement          | Full, Unfinished                                                                                                                           |

### Exterior

|                   |                                         |
|-------------------|-----------------------------------------|
| Exterior          | Wood, Stone, Vinyl                      |
| Exterior Features | Playground Nearby, Schools, See Remarks |
| Roof              | Asphalt Shingles                        |
| Construction      | Wood, Stone, Vinyl                      |
| Foundation        | Concrete Perimeter                      |

**School Information**

|            |                            |
|------------|----------------------------|
| Elementary | Ecole Meridian Heights Sch |
| Middle     | Westview School            |
| High       | Connections For Learning   |

**Additional Information**

|                |                   |
|----------------|-------------------|
| Date Listed    | August 13th, 2024 |
| Days on Market | 257               |
| Zoning         | Zone 91           |

DATA IS DEEMED RELIABLE BUT IS NOT GUARANTEED ACCURATE BY THE REALTORS® ASSOCIATION OF EDMONTON. COPYRIGHT 2025 BY THE REALTORS® ASSOCIATION OF EDMONTON. ALL RIGHTS RESERVED.Trademarks are owned or controlled by the Canadian Real Estate Association (CREA) and identify real estate professionals who are members of CREA (REALTOR®, REALTORS®) and/or the quality of services they provide (MLS®, Multiple Listing Service®)

Listing information last updated on April 27th, 2025 at 12:47am MDT