

\$499,900 - 9621 101 Street, Edmonton

MLS® #E4383383

\$499,900

1 Bedroom, 3.00 Bathroom, 1,260 sqft

Single Family on 0.00 Acres

Rosssdale, Edmonton, AB

Infill lot in the desirable neighborhood of Rosssdale with view of Legislature Building. Could be renovated to maintain a livable home. Has Jacuzzi and Sauna. Available for quick possession. Zoned for infills, and can accommodate a duplex or front to back 4-plex.

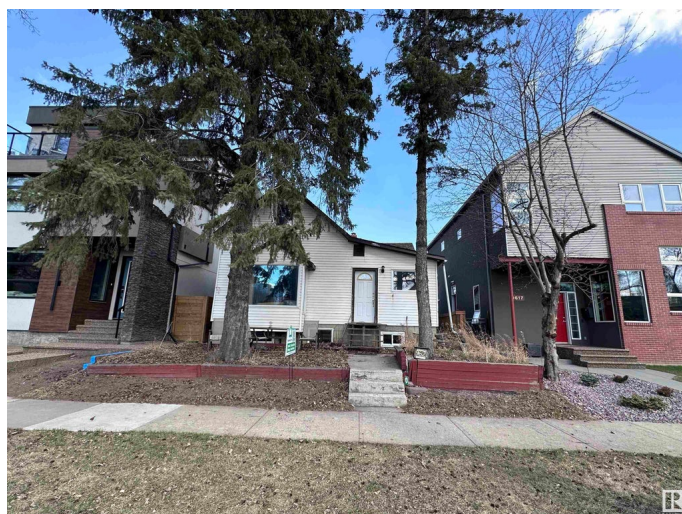
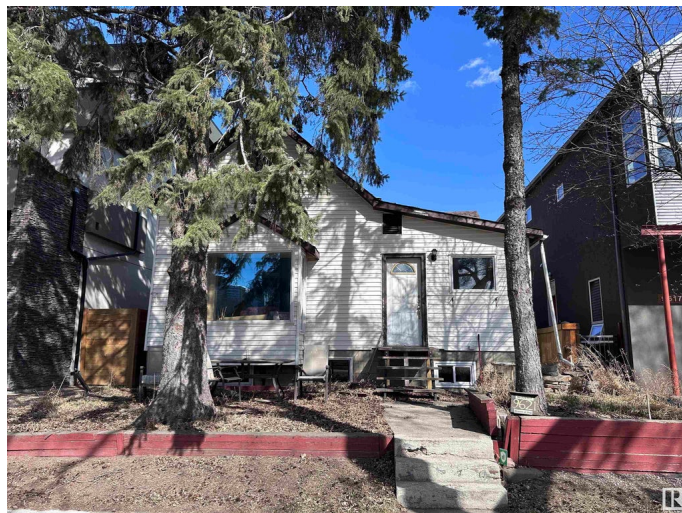
Built in 1910

Essential Information

| | |
|----------------|------------------------|
| MLS® # | E4383383 |
| Price | \$499,900 |
| Bedrooms | 1 |
| Bathrooms | 3.00 |
| Full Baths | 3 |
| Square Footage | 1,260 |
| Acres | 0.00 |
| Year Built | 1910 |
| Type | Single Family |
| Sub-Type | Detached Single Family |
| Style | 2 Storey |
| Status | Active |

Community Information

| | |
|-------------|-----------------|
| Address | 9621 101 Street |
| Area | Edmonton |
| Subdivision | Rosssdale |
| City | Edmonton |



| | |
|-------------|---------|
| County | ALBERTA |
| Province | AB |
| Postal Code | T5K 0W7 |

Amenities

| | |
|----------------|------------------------|
| Amenities | On Street Parking |
| Parking Spaces | 3 |
| Parking | Single Garage Detached |

Interior

| | |
|-------------------|---------------------------|
| Interior Features | ensuite bathroom |
| Appliances | None |
| Heating | Forced Air-1, Natural Gas |
| Stories | 3 |
| Has Basement | Yes |
| Basement | Full, Finished |

Exterior

| | |
|-------------------|--|
| Exterior | Wood, Vinyl |
| Exterior Features | Back Lane, Environmental Reserve, Fenced, Flat Site, Level Land, Paved Lane, Playground Nearby, Private Setting, Schools, Shopping Nearby, Ski Hill Nearby |
| Roof | Asphalt Shingles |
| Construction | Wood, Vinyl |
| Foundation | Concrete Perimeter |

Additional Information

| | |
|----------------|------------------|
| Date Listed | April 21st, 2024 |
| Days on Market | 371 |
| Zoning | Zone 12 |

DATA IS DEEMED RELIABLE BUT IS NOT GUARANTEED ACCURATE BY THE REALTORS® ASSOCIATION OF EDMONTON. COPYRIGHT 2025 BY THE REALTORS® ASSOCIATION OF EDMONTON. ALL RIGHTS RESERVED. Trademarks are owned or controlled by the Canadian Real Estate Association (CREA) and identify real estate professionals who are members of CREA (REALTOR®, REALTORS®) and/or the quality of services they provide (MLS®, Multiple Listing Service®)

Listing information last updated on April 27th, 2025 at 2:02am MDT